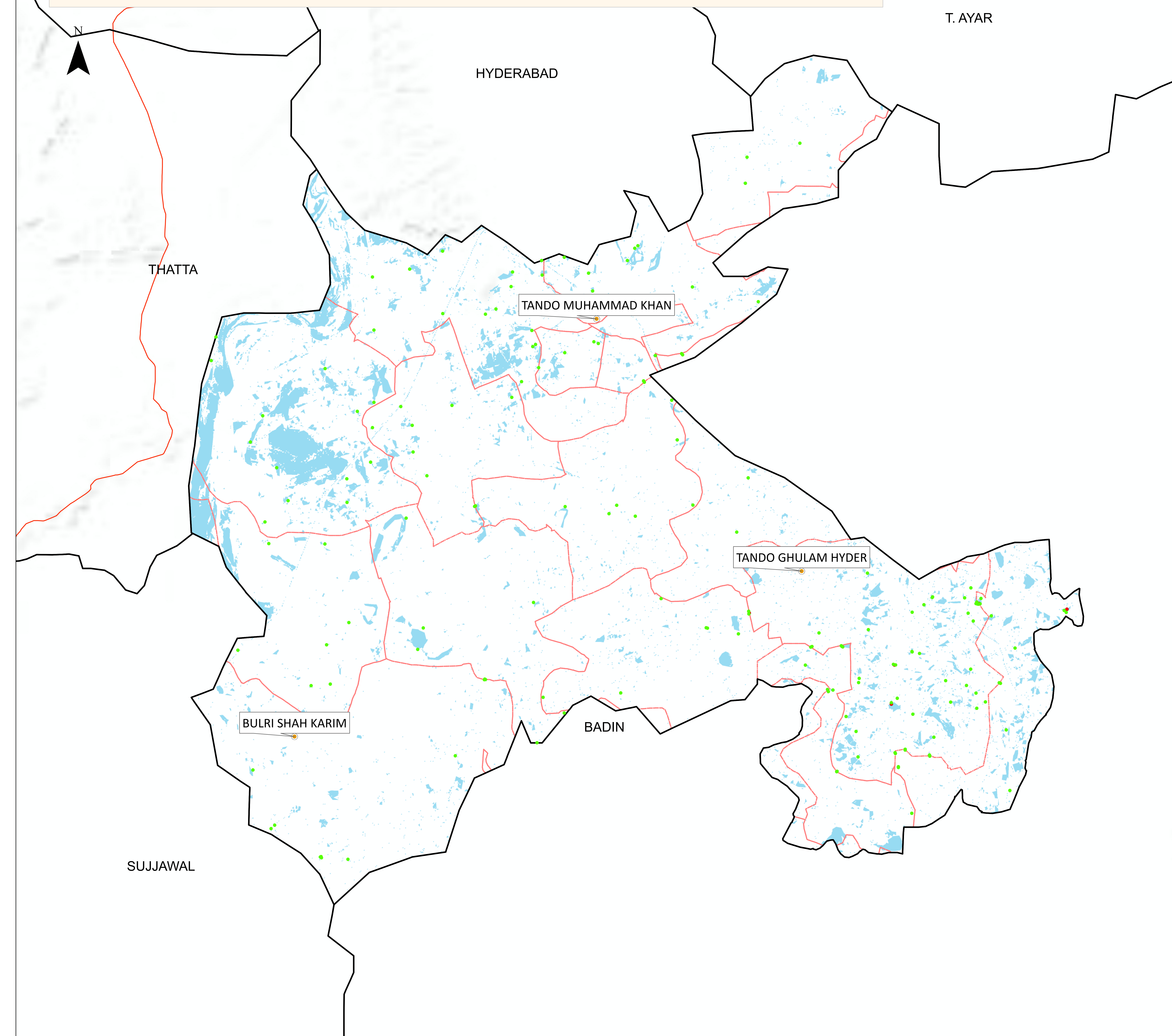


# Flood Inundation in Tando Muhammad Khan District



District Profile			
	21/08/2022	20/09/2022	Change
District Area		1,813.46 Sq.Km	
Area Inundated	751.23 Sq.Km	128.2 Sq.Km	-623.03
	41.43%	7.07%	
Crop Land	378,351.85 Acres		
Crop Land Inundated	174,040.3 Acres	14,044.96 Acres	-159,995.34
	46.00%	3.71%	
Rainfall (Jul-Aug)	332 mm		
Population (as per 2017 Census)	705,357		
Affected Union Councils	31 Out of 31	29 out of 31	

UC-wise Affected Villages						
Name	Submerged in Water			Surrounded by Water		
	21/08/2022	20/09/2022	Change	21/08/2022	20/09/2022	Change
TANDO GHULAM HYDER	27	2	-25	170	44	-126
GHULAM SHAH BAGRANI	18	1	-17	57	8	-49
KARIO	12	-	-12	39	11	-28
LAKHAT	7	-	-7	78	9	-69
ALLAH YAR TURK	6	-	-6	68	7	-61
BULRI SHAH KARIM	6	-	-6	56	10	-46
DANDO	4	2	-2	64	14	-50
NAZAR PUR	4	-	-4	41	2	-39
SAEEDPUR	4	1	-3	50	16	-34
JANHAN SOOMRO	3	-	-3	39	7	-32
SAEED MATTO	3	-	-3	58	8	-50
MULLAN KATIAR	2	-	-2	27	13	-14
TANDO SAIN DAD	2	-	-2	20	11	-9
GHARO	1	-	-1	2	-	-2
PHARKARA	1	-	-1	11	2	-9
T.M.KHAN 3	1	-	-1	13	3	-10
DUBI	-	-	0	1	-	-1
SH.BHIRKIO	-	-	0	6	3	-3
T.M.KHAN 1	-	-	0	4	2	-2
T.M.KHAN 2	-	-	0	8	1	-7
Total	101	6	-95	812	171	-641

**Disclaimer:** Flood extent of Sentinel has been used for preliminary damage assessment and depicts status of flood inundation as of image acquisition date. The Union Council boundaries and names used in development of this product were obtained from Board of Revenue, Sindh.

**Source:** Sentinel-2-L2A, 20 September 2022

